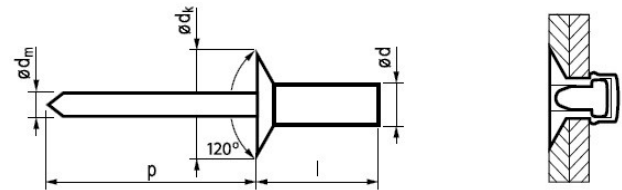


# 1204

# Countersunk head AL-ST closed rivet, closed blind rivet, closed pop rivet

Rivet body: Aluminum (AlMg5)  
Mandrel: Steel, Phosphated



$\phi d$ * Drill hole mm	l: length (mm) +1/-0,2	Grip range mm	Part no.	$\phi d_k$ mm	k mm	$\phi d_m$ mm	p mm	Tensile Newton	Shear Newton	Description
3,2 [+/-0,08] Ø 3,3	7,5	1,5-3,5	1204-3207	6,0 [+/-0,4]	0	~1,70	≥27	1245	1070	3,2*7 Countersunk Aluminum/Steel closed rivet
	9,0	3,0-5,0	1204-3209							3,2*9 Countersunk head Al/St waterproof rivet
	10,5	4,5-6,5	1204-3210							3,2*10 Countersunk head Al/St closed pop rivet
4,0 [+/-0,08] Ø 4,1	9,5	3,0-5,0	1204-4009	7,5 [+/-0,5]	0	~2,2	≥27	2240	1710	4,0*9 Countersunk head Al/St waterproof rivet
	11,0	4,5-6,5	1204-4011							4,0*11 Countersunk head Al/St closed pop rivet
	12,5	6,0-8,0	1204-4012							4,0*12 Countersunk head Al/St closed blind rivet
4,8 [+/-0,08] Ø 4,9	9,5	2,5-4,5	1204-4809	9,0 [+/-0,5]	0	~2,65	≥27	3070	2230	4,8*9 Countersunk head Al/St closed pop rivet
	11,0	4,0-6,0	1204-4811							4,8*11 Countersunk head Al/St closed blind rivet
	12,5	5,5-7,5	1204-4812							4,8*12 Countersunk Aluminum/Steel closed rivet
	14,0	7,0-9,0	1204-4814							4,8*14 Countersunk head Al/St waterproof rivet
	15,5	8,5-10,5	1204-4815							4,8*15 Countersunk head Al/St closed pop rivet
	19,0	12,0-14,0	1204-4819							4,8*19 Countersunk head Al/St closed blind rivet

## Technical specifications:

- after riveting the stem/mandrel of rivet fixed in the rivet body
- airtight and waterproof (extra safe if used with silicone)
- it is good till 35 bar of pressure
- it has stronger shear/tensile strength as the regular rivets