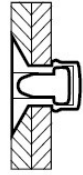
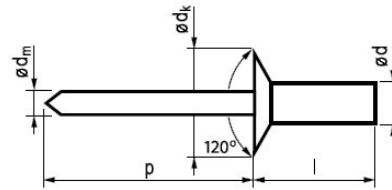


1234

Countersunk head AL-A2 closed rivet, closed blind rivet, closed pop rivet

Rivet body: Aluminum (AlMg5)
Mandrel: Stainless steel (A2)



Ød * Drill hole mm	l: length (mm) +1/-0,2	Grip range mm	Part no.	Ødk mm	k mm	Ødm mm	p mm	Tensile Newton	Shear Newton	Description
3,2 [+/-0,08] Ø 3,3	9,0	3,0-5,0	1234-3209	6,0 [+/-0,4]	0	~1,70	≥27	1245	1070	3,2*9 Countersunk Aluminum/Inox closed rivet
4,0 [+/-0,08] Ø 4,1	9,5	3,0-5,0	1234-4009	7,5 [+/-0,5]	0	~2,2	≥27	2240	1710	4,0*9 Countersunk head Al/A2 waterproof rivet
	11,0	4,5-6,5	1234-4011							4,0*11 Countersunk head Al/A2 closed pop rivet
4,8 [+/-0,08] Ø 4,9	11,0	4,0-6,0	1234-4811	9,0 [+/-0,5]	0	~2,65	≥27	3070	2230	4,8*11 Countersunk head Al/A2 closed pop rivet
	14,0	7,0-9,0	1234-4814							4,8*14 Countersunk head Al/A2 closed blind rivet
	18,0	11,0-13,0	1234-4818							4,8*18 Countersunk Aluminum/Inox closed rivet

Technical specifications:

- after riveting the stem/mandrel of rivet fixed in the rivet body
- airtight and waterproof (extra safe if used with silicone)
- it is good till 35 bar of pressure
- it has stronger shear/tensile strength as the regular rivets
- due to Inox stem/mandrel it is stainless