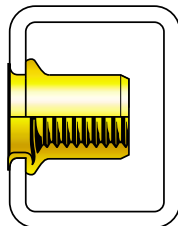


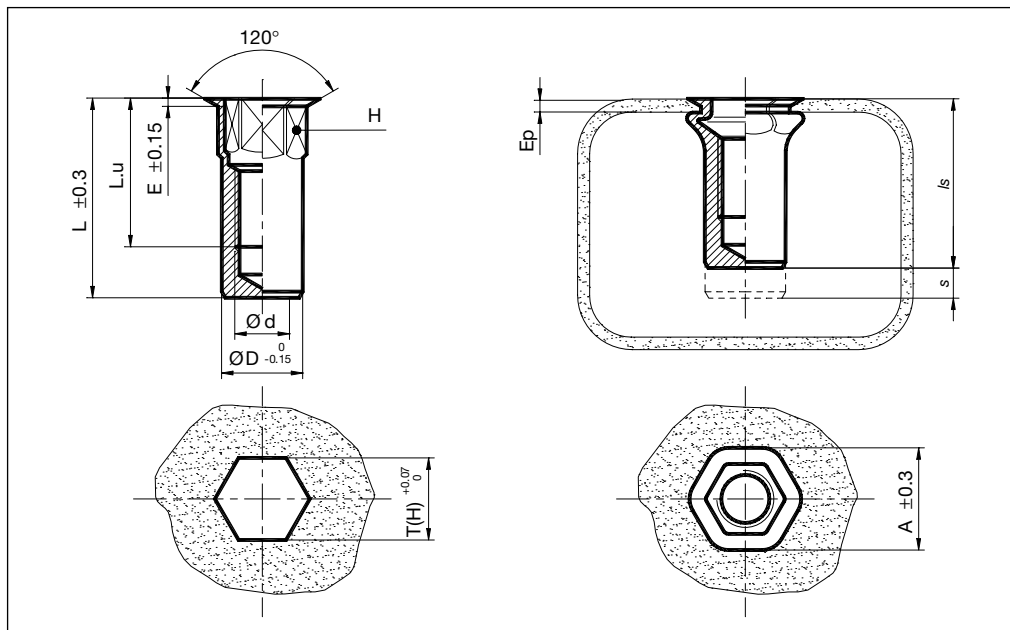
# CLUFIX



**H.fB..**

**STEEL**

**Blind nut**



- Flush head
- Body: Hexagonal closed end
- Material: Steel coating zinc. yellow

Thread Ø d	Code	Thickness Ep	H	T (H) hex hole	A	L	Lu	E	Ø D	Designation	
M 3 x 0,50	GGA03BH11J	0,0 - 1,1	5,0	5,0	5,8	11,7	6,5	0,3	5,0	H 3fB11	STEEL
	GGA03BH23J	1,0 - 2,3								H 3fB23	STEEL
M 4 x 0,70	GGA04BH13J	0,0 - 1,3	6,0	6,0	6,8	15,1	8,5	0,3	6,0	H 4fB13	STEEL
	GGA04BH30J	1,0 - 3,0								H 4fB30	STEEL
M 5 x 0,80	GGA05BH15J	0,0 - 1,5	7,0	7,0	8,0	16,8	10,2	0,4	7,0	H 5fB15	STEEL
	GGA05BH35J	1,0 - 3,5								H 5fB35	STEEL
M 6 x 1,00	GGA06BH15J	0,0 - 1,5	9,0	9,0	10,0	21,3	12,5	0,4	9,0	H 6fB15	STEEL
	GGA06BH35J	1,0 - 3,5								H 6fB35	STEEL
M 8 x 1,25	GGA08BH18J	0,0 - 1,8	11,0	11,0	12,0	24,0	13,5	0,4	11,0	H 8fB18	STEEL
	GGA08BH50J	1,5 - 5,0								H 8fB50	STEEL
M10 x 1,50	GGA10BH32J	0,0 - 3,2	13,0	13,0	14,4	32,0	21,5	0,5	13,0	H10fB32	STEEL
	GGA10BH55J	2,5 - 5,5								H10fB55	STEEL
M12 x 1,75	GGA12BH42J	0,0 - 4,2	16,0	16,0	17,4	36,1	23,5	0,5	16,0	H12fB42	STEEL
	GGA12BH76J	4,0 - 7,6								H12fB76	STEEL

Is / s after test according to: - thickness  
- Ø hole  
- material

All the parts are not always in stock.  
Other forms and characteristics, please ask.

Unit: mm

**LA CLUSIENNE**

**CLUFIX - FASTENERS**

313, RUE LOUIS ARMAND - ZI DES GRANDS PRÉS - BP 220 - 74304 CLUSES CEDEX - FRANCE  
TEL.: (33) 04 50 98 13 13 - FAX: (33) 04 50 98 28 89 - E-MAIL: commercial@clufix.com

November, 2003  
Specifications subject to change without prior notice